

# Aktina Medical Set-up Sheet

For Directions, See ArmCradle 4 Instructions For Use

## ArmCradle 4



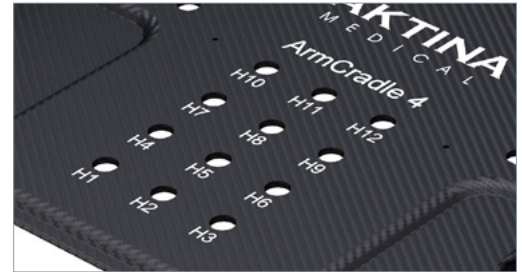
Patient:

Date:

Set-up Notes:

### 1. Head Position:

H1	H2	H3	H4	H5	H6
H7	H8	H9	H10	H11	H12



Head Position

Other Headrest:

### 2. Indexing Bar Spot:

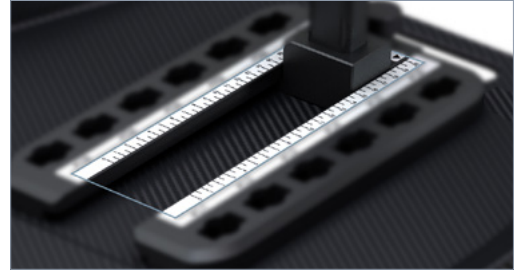
S1	S2	S3	S4
----	----	----	----



Indexing Bar Spot

Table Index:

### 3. Y Arm Positioner Sup-Inf:



Y Arm Positioner Sup-Inf

### 4. Y Arm Positioner Ant-Post:



Y Arm Positioner Ant-Post

### 5. Vertical Hand Grip - Left Side:

L1      L2      L3      L4      L5      L6



Vertical Hand Grip - Left Side

### 6. Vertical Hand Grip - Right Side:

R1      R2      R3      R4      R5      R6



Vertical Hand Grip - Right Side